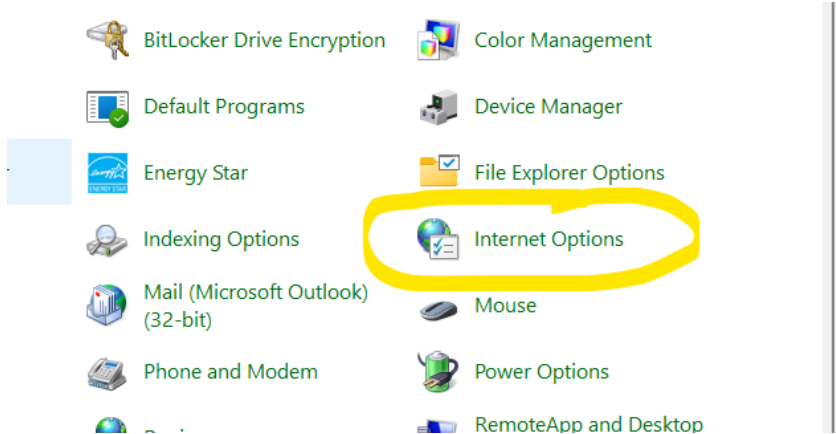
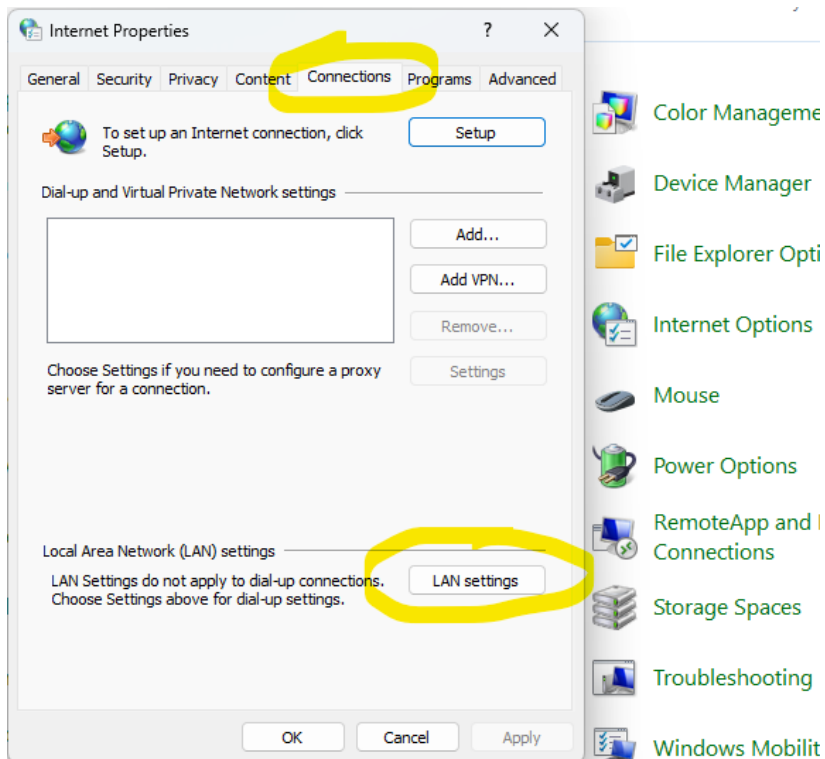


Outlook, Teams, Office won't Connect/Login ...

1. Go to control panel and click on "Internet Options"



2. Click on the "Connections" tab then click the "Lan Settings" button at the bottom right.



3. Ensure “Automatically detect settings” is checked/ticked; if not, check it and click the “OK” button. Click the “OK” button on all the remaining open dialog boxes and check to see if this resolved the issue.

